

Specific models can be manufactured



## Technical valves

**Diameter of pipes**



Standard-ref: CSD

<b>200</b>	<b>1000</b>
Mini	Maxi

**Diameter of pipes**



Connecté-ref: CC

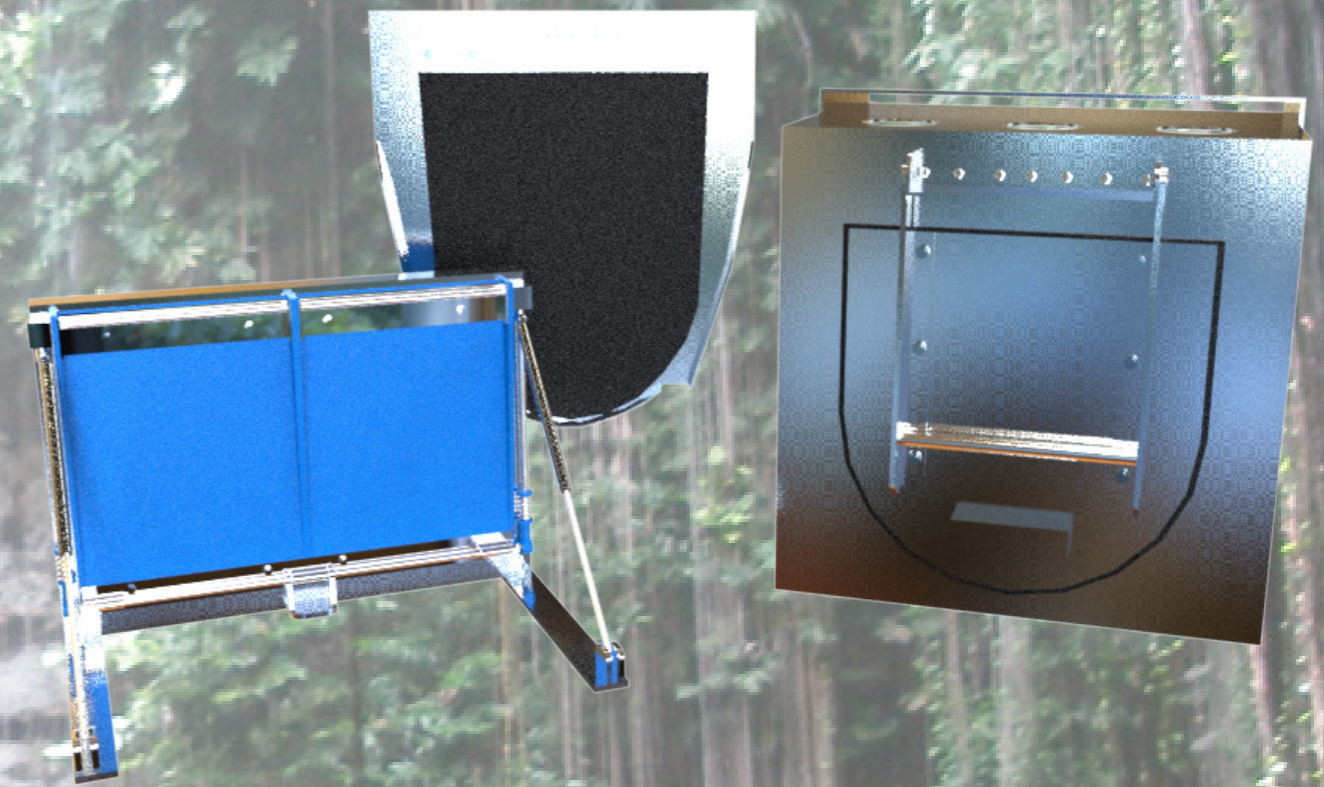
<b>200</b>	<b>1000</b>
Mini	Maxi

**Diameter of pipes**



Coffrant-ref: CCR

<b>500</b>	<b>1500</b>
Mini	Maxi



Protect your networks from unwanted water

The non-return valve allows the overflow of the network to be evacuated while preventing the intrusion of external waters (floods).



Head office :

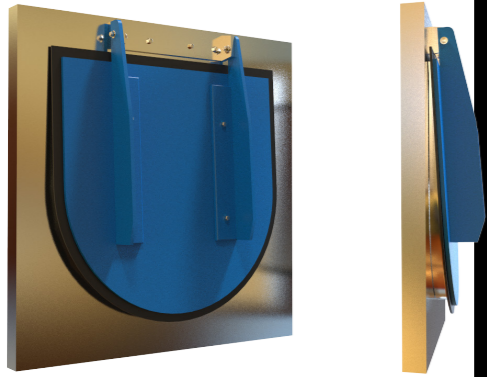
51 chemin du Grand Champ  
69890 La Tour de Salvagny

(+33) 4.78.48.83.94  
(+33) 6.74.57.81.34

Website <http://hydrass.eu>  
[siko.b@wanadoo.fr](mailto:siko.b@wanadoo.fr)



## Standard valve



Our valves remain watertight when the evacuated water is loaded with waste. They are equipped with a flexible membrane compensating the presence of waste and protecting the network of water returns and floods.

Stainless steel 304L or 316L  
Imputrescible membrane

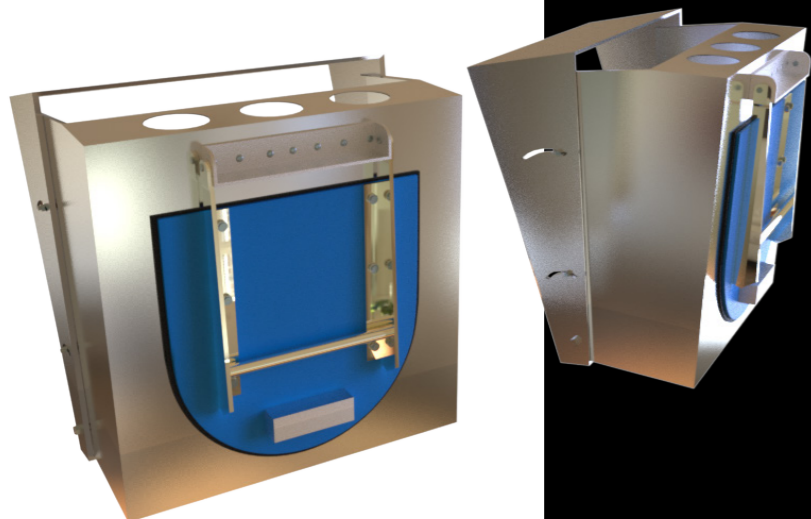
## Connected valve



This valve is equipped with a sensor and an event recorder. It is made up of an inclinometer placed on the body of the flap and a cable. (Waterproof) Each opening movement is recorded and transformed into flow rate. Remote communication.

Stainless steel 304L or 316L  
Imputrescible membrane  
Recorder with battery

## Valve to fill with concrete



This valve is fixed directly on the pipe, it has a formwork part that is filled with concrete. With this mass it is more stable during floods. It is installed in a single operation laying and placing of the concrete.

Resistance to floods from a height of 10 meters.

## Adapted models



Hydrass develops its own flexible membrane products for optimum sealing



Standard valve in a tank